



*Total Solution Provider in Saw Device*

---

# SL06219DT

62.50 MHz IF SAW Filter  
19.20 MHz Bandwidth  
Revision 0: 11. April. 2008



- Electrical Characteristics
  - Package Dimensions
  - Testing Environment
  - Frequency Characteristics
- 

**SAWNICS Inc.**

---

460 Cheonheung-ri, Seonggeo-eup, Cheonan-si, Chungcheongnam-do, 330-836 / Korea.  
Tel: +82 41 550 9372 / Fax: +82 41 550 9399 / [www.sawnics.com](http://www.sawnics.com)

## □ Electrical Characteristics

### Maximum Ratings

Parameters Description	Unit	Minimum	Typical	Maximum
Operating Temperature Range	°C	-30	-	60
Storage Temperature Range	°C	-40	-	85
Maximum DC Voltage	V	-	-	10
Maximum Input Power	dBm	-	-	10
Source Impedance (single ended) <sup>(1)</sup>	Ω	-	50	-
Load Impedance (single ended) <sup>(1)</sup>	Ω	-	50	-
Package type & size	T			
Length x Width	mm <sup>2</sup>	-	9.1 x 4.8	-
Height	mm	-	-	1.35

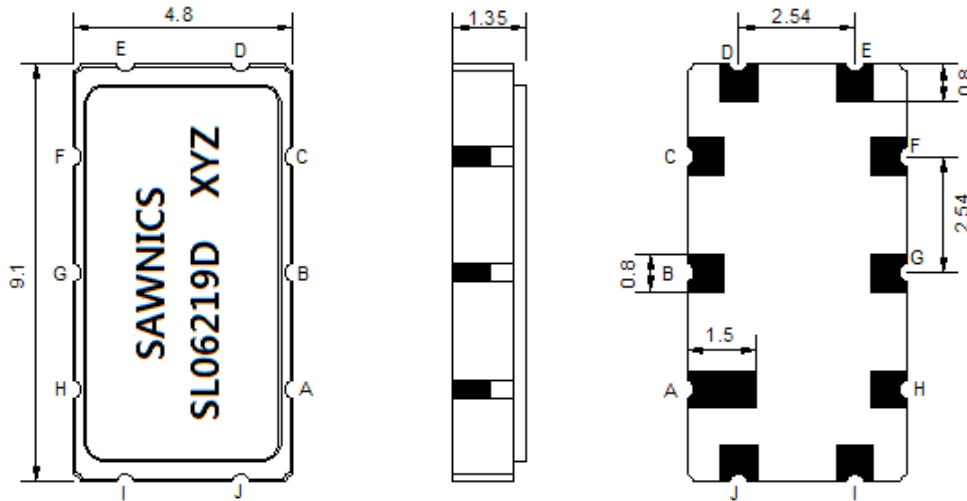
### Electrical Specification

Parameters Description	Unit	Minimum	Typical	Maximum
Center Frequency (Fo)	MHz	-	62.50	-
Insertion Loss at Fo	dB	-	19.0	20.5
Group Delay Variation at Fo±9.22MHz	nsec	-	30	80
Absolute Delay at Fo	usec	-	0.98	-
Passband Ripple at Fo±9.22MHz	dB	-	0.70	1.0
Bandwidth at -1dB	MHz	18.70	19.20	-
Bandwidth at -5dB	MHz	-	20.60	-
Bandwidth at -7dB	MHz	-	20.95	-
Bandwidth at -40dB	MHz	-	25.60	26.50
Relative Attenuation:				
Lower sidelobe	dB	40	45	-
Upper sidelobe	dB	40	45	-

**Notes :** (1) With Matching Network (Ref. Testing Environment Circuit as shown below).

Those impedances could be modified with different impedance values and/or structures, if necessary.

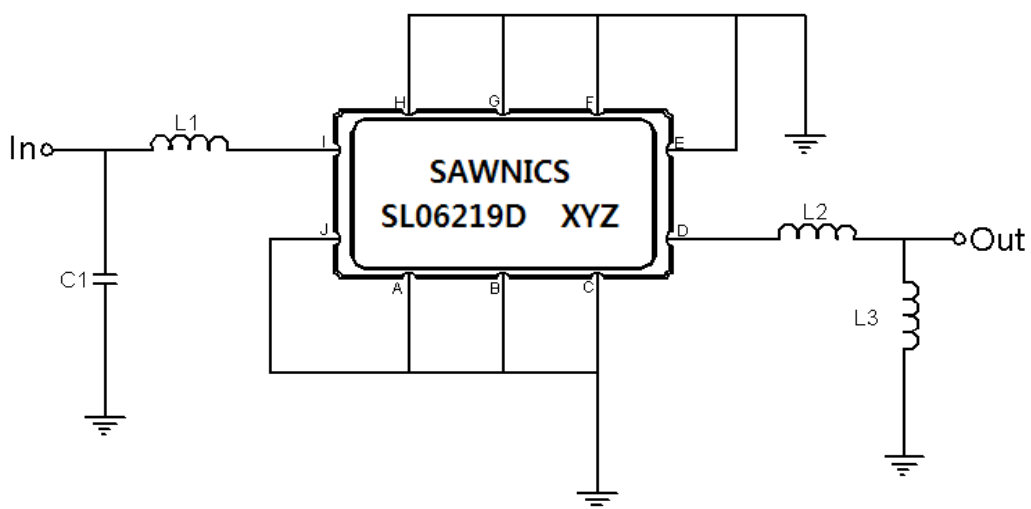
### Package Dimensions



- ① SAWNICS: Brand
- ② SL06219D: Model Name
- ③ X : Date Code (Year)
- ④ Y : Date Code (Month)
- ⑤ Z : Date Code (Date)
- : Index Dot

Pin Description	
A, B, C, E, F, G, H, J	Ground
I	Input
D	Output

### Testing Environment

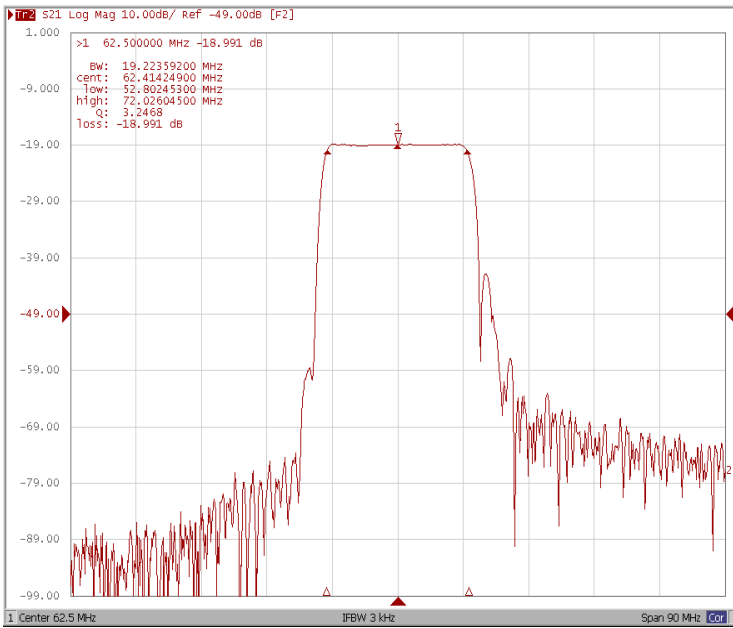


Test Fixture & Values	
Input	L1 = 150 nH, C1 = 56 pF
Output	L2 = 33 nH, C2 = 68 pF
Source/Load Impedance	50 Ω

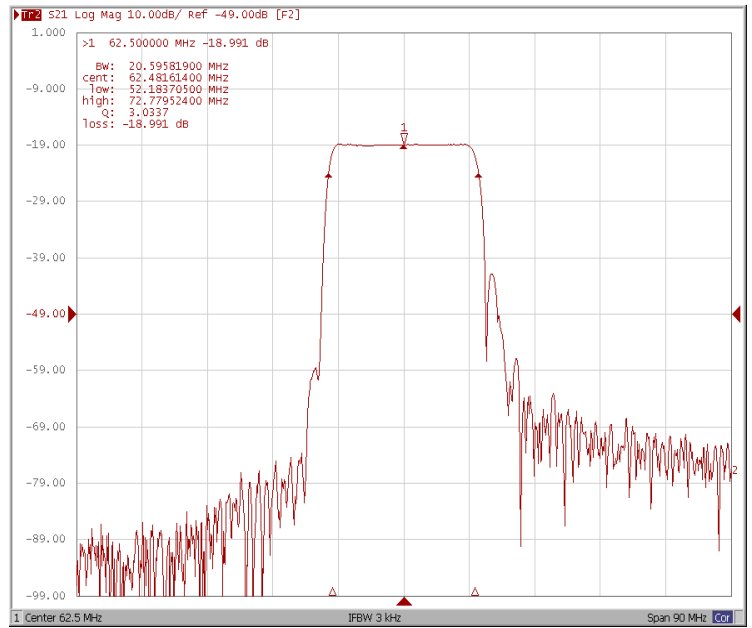
### Frequency Characteristics

#### Frequency Response

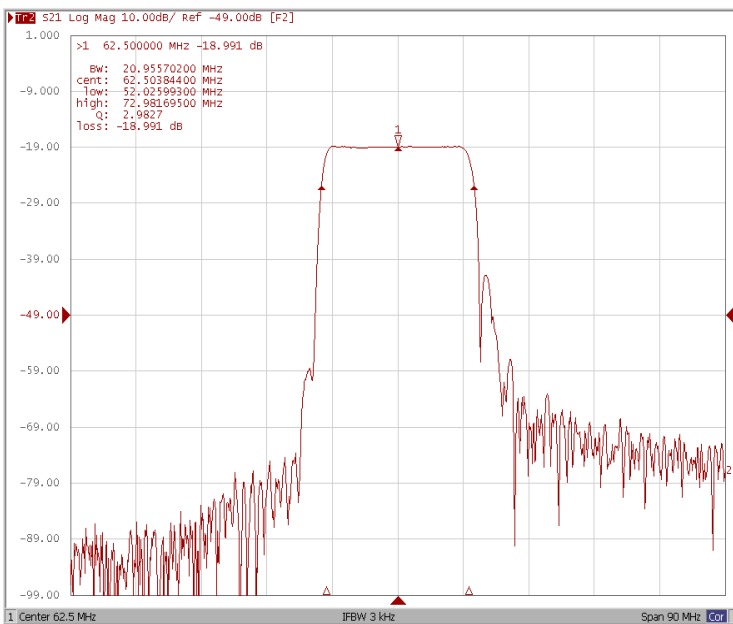
**Bandwidth at -1.0 dB**



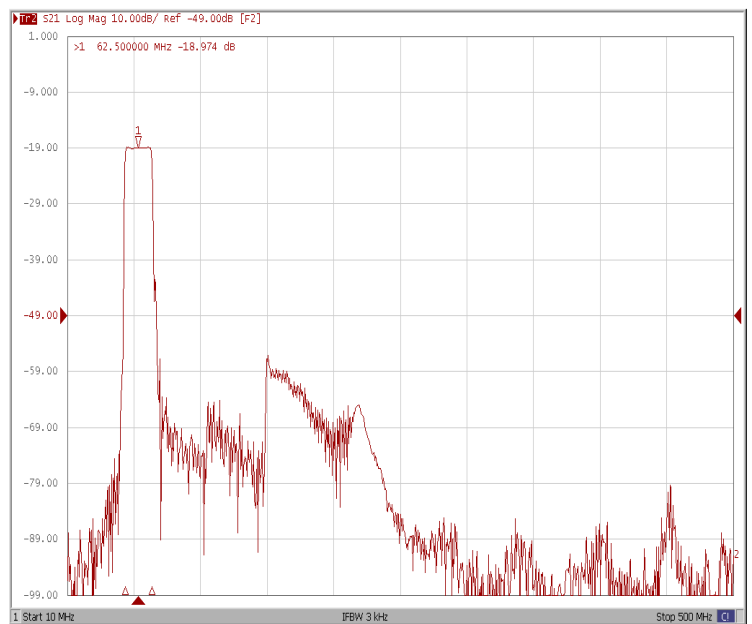
**Bandwidth at -5.0 dB**



**Bandwidth at -7.0 dB**



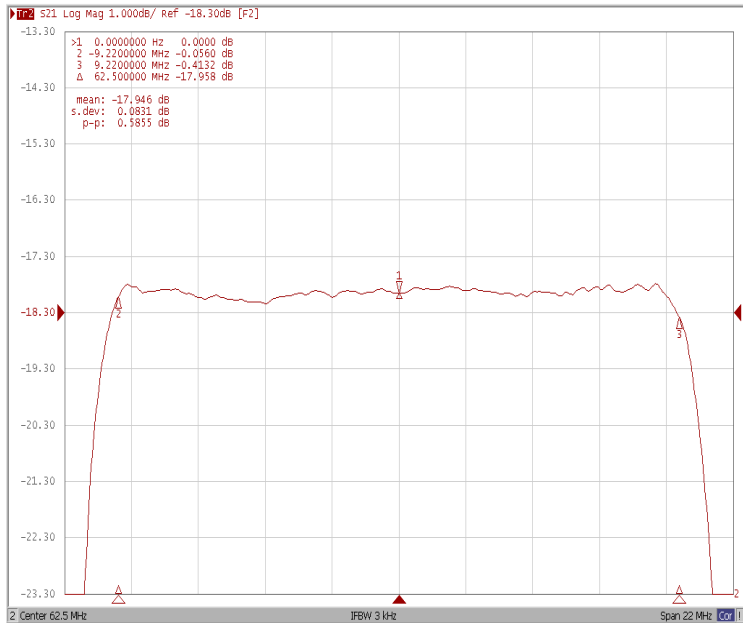
**Wide-Band**



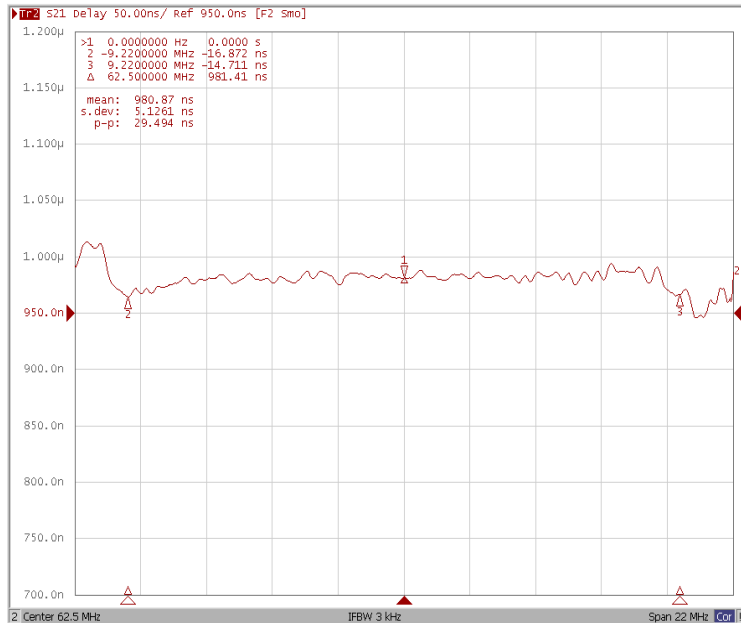
### Frequency Characteristics

#### Frequency Response

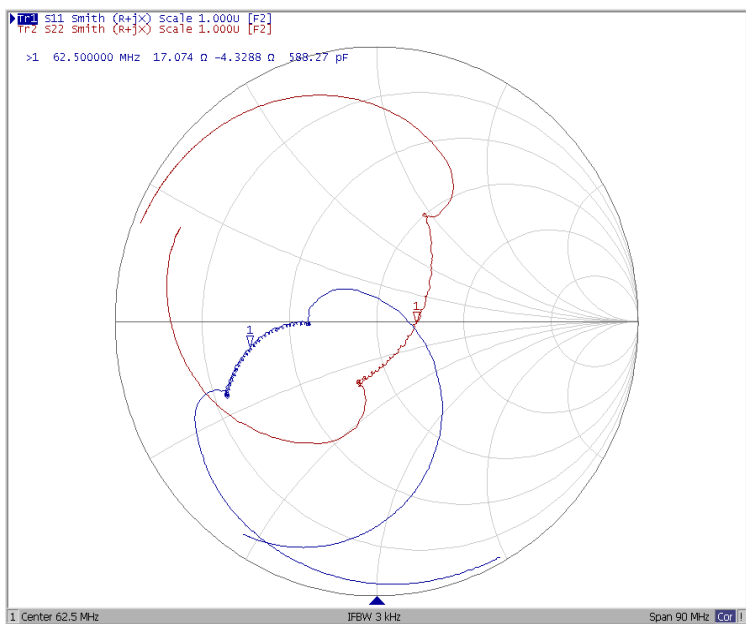
Ripple Variation at Fo ±9.22MHz



Group Delay Variation at Fo ±9.22MHz



Smith Chart



SWR

